

FISHWAY STATUS REPORT

Date: 11/25/2012
 Inspection Period: 11/18 - 24/2012

THE DALLES DAM



**US Army Corps
 of Engineers**
 Portland District

The Dalles Project-Fisheries
 P.O. Box 564
 The Dalles, OR 97058-9998
 Phone: 541-506-3800

Fishways are inspected twice daily. Additional daily monitoring done via automation system in fisheries office.

The Dalles Dam	Inspections Out of Criteria	Criteria Limit	Total Number of Inspections: 21	Temperature: 52.4 F
			Comments	Secchi: 5.1 Ft.
NORTH FISHWAY				
Exit differential	0	≤ 0.5'		
Count station differential	0	≤ 0.3'	Count station windows cleaned twice weekly.	
Weir crest depth	0	1.0' ± 0.1'		
Entrance differential	0	1.0' - 2.0'	Average 1.3	Daily differentials & weir depths, see AVGS tab.
Entrance weir N1	0	depth (≥ 8')	Average 10.4	
Entrance weir N2		Closed	Bulkhead installed	
PUD Intake differential	0	≤ 0.5'		
EAST FISHWAY				
Exit differential	0	≤ 0.5'		
Removable weirs 154-157	0	Per forebay	Auto adjusts 1' increments.	
Weir 158-159 differential	0	1.0' ± 0.1'		
Count station differential	0	≤ 0.3'	Picketed leads raked every other day. Count station window cleaned twice weekly.	
Weir crest depth	0	1.0' ± 0.1'		
Junction pool weir JP6	2	depth (≥ 7')	Manually adjusted as needed. Low tailwater caused the out of criteria.	
East entrance differential	0	1.0' - 2.0'	Average 1.5	Daily differentials & weir depths, see AVGS tab.
Entrance weir E1	0	No criteria	Average 9.3	Manually adjusted.
Entrance weir E2	0	depth (≥ 8')	Average 9.8	
Entrance weir E3	0	depth (≥ 8')	Average 9.8	
Collection channel velocity	0	1.5 - 4 fps	Average 2.5	See Velocities tab for more complete information.
Transportation channel velocity	0	1.5 - 4 fps	Average 2.8	
North channel velocity	0	1.5 - 4 fps	Average 3.1	
South channel velocity	0	1.5 - 4 fps	Average 3.7	
West entrance differential	0	1.0' - 2.0'	Average 1.4	
Entrance weir W1	0	depth (≥ 8')	Average 8.8	
Entrance weir W2	0	depth (≥ 8')	Average 8.8	
Entrance weir W3	0	No criteria	Average Closed	
South entrance differential	0	1.0' - 2.0'	Average 1.3	Daily differentials & weir depths, see AVGS tab.
Entrance weir S1	0	depth (≥ 8')	Average 8.5	Manually adjusted.
Entrance weir S2	0	depth (≥ 8')	Average 8.6	
JUVENILE PASSAGE				
Sluiceway operation	8	units 1,8,18	MU3 sluiceways were open until MU1 was RTS on 11/21/12.	
Turbine trashrack drawdown	0	<1.5', wkly	Range: 0.2' - 0.5'	
Spill volume	0	40%, 24hr	On seal.	
Spill Pattern	0	per FPP	On seal.	
Turbine Unit Priority	8	per FPP	Main Unit 1 and 2 returned to service 11/21/12.	
Turbine 1% Efficiency	0	per FPP		

OTHER ISSUES:**THE DALLES****Birds:**

Fisheries personnel are collecting bird count data twice daily. One juvenile bald eagle observed zone PH3 on 11/21/12. Normal numbers of increased fall bird activity around project for juvenile shad outmigration. Refer to "Avian Distribution" tab for species, location, and numbers.

Operations:

Gatewell drawdown was completed on 11/24/12. Differentials ranged from 0.2-0.5' and are within criteria. Main Units 1 and 2 out of service for transformer maintenance. Outage was coordinated with FPOM last April. Main Unit 1 and 2 returned to service 11/21.

Maintenance:

East fish ladder dewatering scheduled 12/3 and North fish ladder dewatering for 1/28/2013. ROV inspection of the south entrance bulkhead sill has been completed. Small amount of debris in bulkhead guide; 42 minutes outage on the Fish Units. Dewatering of north entrance below tailwater tentative due to possible funding constraints.

Current Outages:

Main Units 15 and 16, and Transformer 8 forced out of service due to high levels of combustible gas in the transformer oil. Return to service 6/6/2012. Main Unit 2 out of service 10/1 to 11/21 for five year over haul. Main Unit 20 out of service 10/15 to 11/21 for digital governor Install. Main Unit 12 out of service 11/05 to 12/13 for digital governor install.

Studies:

East Fishway backup water supply study; DDR assigned to Walla Walla Product Development Team. Pacific States Marine Fisheries Commission (PSMFC) and Biomark determining best site and cable connect for the new Thin Walled PIT Tag Antennae coming this winter. Logistics underway.

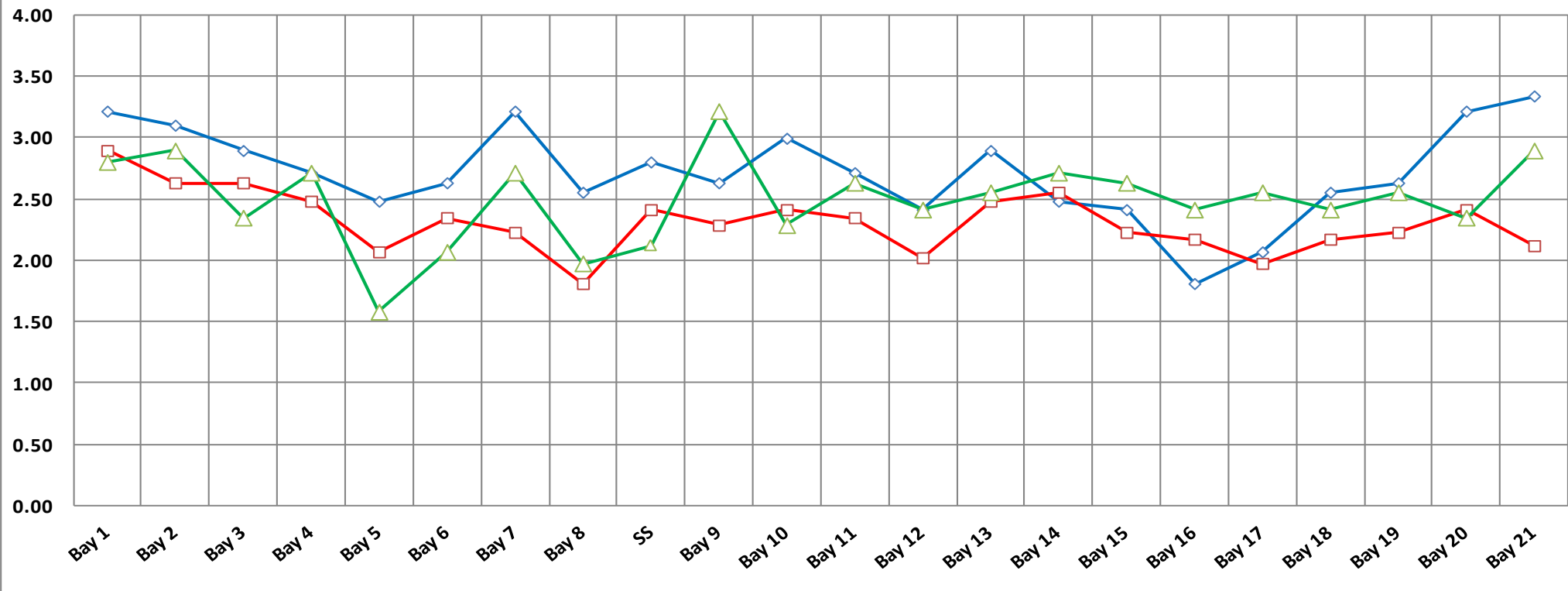
Research/Contractors:

WDFW fish counting season completed 10/31, video monitoring will continue through 2/28/2013. Counting will resume 4/1/2013 with Normandeau. All fish research activities are done for the season and all deck equipment has been removed. Sub-surface equipment is expected to be removed via dive early Feb, including derelict equipment remaining on the forebay pier noses and inside the sluiceway. Battelle to remove the one remaining trailer located between Main Units 6/7 on 11/29.

Approved by;
Ron D. Twiner
Operation Project Manager
The Dalles Dam

The Dalles Dam Collection Channel Velocities (fps)

10/30/2012 11/6/2012 11/16/2012

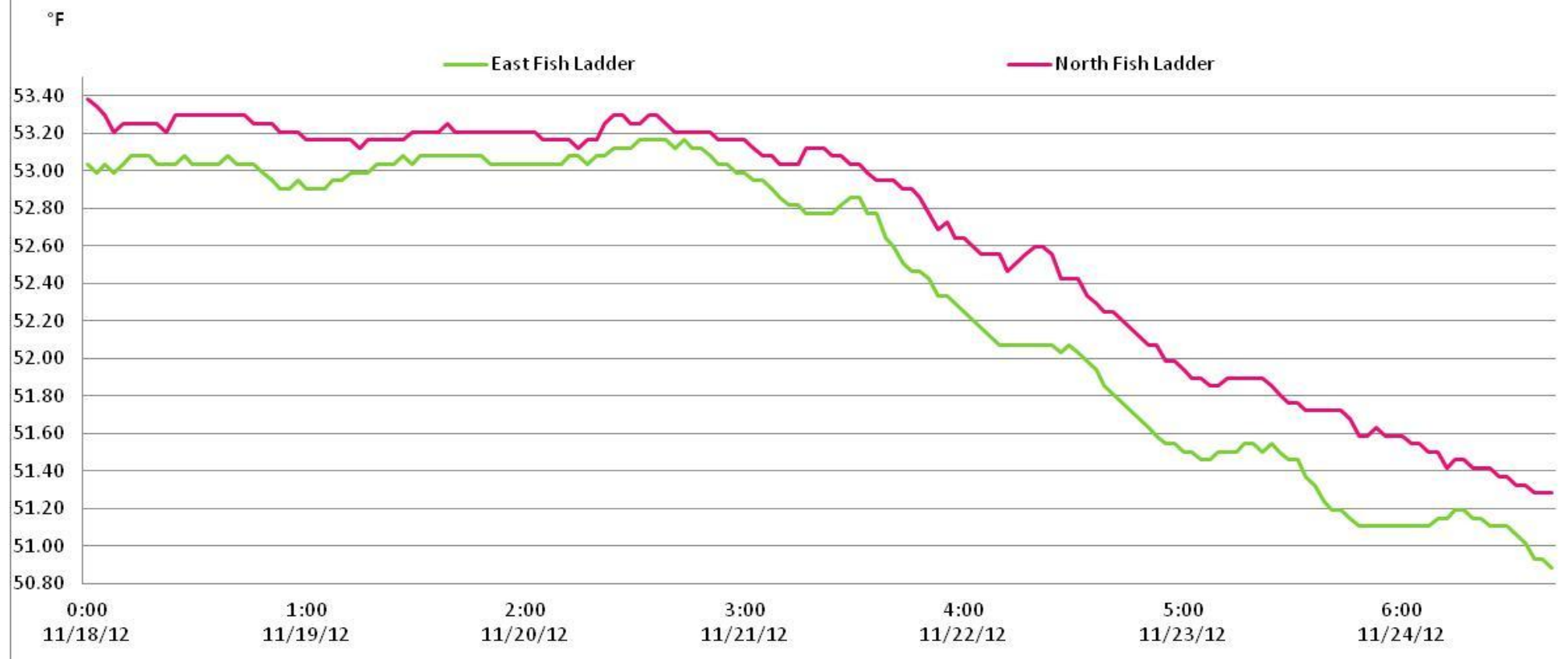


Temp:		Secchi:	
	53.0	SUN	5.0
	53.0	MON	5.0
	53.0	TUES	5.0
	52.8	WED	5.0
	52.1	THUR	5.0
	51.5	FRI	6.0
	51.1	SAT	5.0
AVG:	52.4	AVG:	5.1

The Dalles Dam Daily Readings and Averages for Temperatures, Secchi, Entrances, and Spill

North Fish Ladder			East Fish Ladder											% Spill			
North Entrance		East Entrance						West Entrance			South Entrance						
Date:	Differential	N1 Depth	Differential	E1Depth	E2 Depth	E3 Depth	JP 6	Differential	W1Depth	W2 Depth	W3 Depth	Differential	S1 Depth		S2 Depth		
11/18/12	1.3	10.7	1.6	9.1	10.4	10.4	9.6	1.4	8.5	8.5	Closed	1.5	8.4	8.5	On sea l		
11/18/12	1.2	10.5	1.4	10.5	10.6	10.6	10.9	1.5	10.0	10.1		1.5	9.0	9.1			
11/18/12			1.5	10.1	10.6	10.6		1.7	8.5	8.5		1.5	8.6	8.7			
11/19/12	1.3	10.5	1.6	10.5	10.6	10.7	9.7	1.5	9.6	9.6		1.3	8.7	8.6			
11/19/12	1.1	10.7	1.5	8.0	8.6	8.6	8.7	1.6	9.9	9.9		1.6	8.9	9.0			
11/19/12			1.3	10.4	10.7	10.5		1.1	10.0	10.0		1.3	8.9	9.0			
11/20/12	1.3	10.5	1.4	9.0	10.1	10.1	8.3	1.6	8.5	8.6		1.4	8.3	8.4			
11/20/12	1.2	10.5	1.6	9.0	10.1	10.1	8.1	1.5	8.5	8.4		1.5	10.2	10.2			
11/20/12			1.4	9.0	10.1	10.1		1.5	8.5	8.6		1.4	8.4	8.3			
11/21/12	1.4	9.6	1.6	9.1	9.0	9.0	7.7	1.5	8.6	8.6		1.4	8.4	8.3			
11/21/12	1.3	9.4	1.6	8.9	9.0	9.0	8.3	1.4	8.4	8.4		1.5	8.2	8.2			
11/21/12			1.3	8.9	9.9	9.8		1.4	8.5	8.5		1.4	8.3	8.3			
11/22/12	1.3	10.6	1.4	9.1	10.0	10.0	9.7	1.5	8.5	8.6		1.3	8.3	8.4			
11/22/12	1.3	10.6	1.5	9.0	10.1	10.0	8	1.5	8.5	8.4		1.4	8.2	8.3			
11/22/12			1.5	9.0	10.1	10.0		1.5	8.6	8.5		1.4	8.3	8.4			
11/23/12	1.4	10.6	1.4	8.9	9.1	9.0	6.9	1.5	8.2	8.2		1.4	8.4	8.4			
11/23/12	1.2	10.5	1.4	9.5	9.6	9.7	9.1	1.5	8.9	8.9		1.5	8.4	8.4			
11/23/12			1.6	9.0	9.1	9.0		1.3	8.5	8.5		1.2	8.4	8.4			
11/24/12	1.5	10.6	1.3	9.4	9.3	9.5	6.5	1.3	8.5	8.6		1.3	8.3	8.4			
11/24/12	1.3	10.6	1.4	9.4	9.3	9.5	8.2	1.4	8.7	8.5		1.4	8.4	8.3			
11/24/12			1.4	9.4	9.3	9.5		1.2	8.6	8.7		1.3	8.4	8.3			
AVG:	1.3	10.4	1.5	9.3	9.8	9.8	8.6	1.4	8.8	8.8		Closed	1.4	8.5		8.6	
Third fish way inspection for east fish ladder, east, west, and south entrances completed via automation system in fisheries office.																	

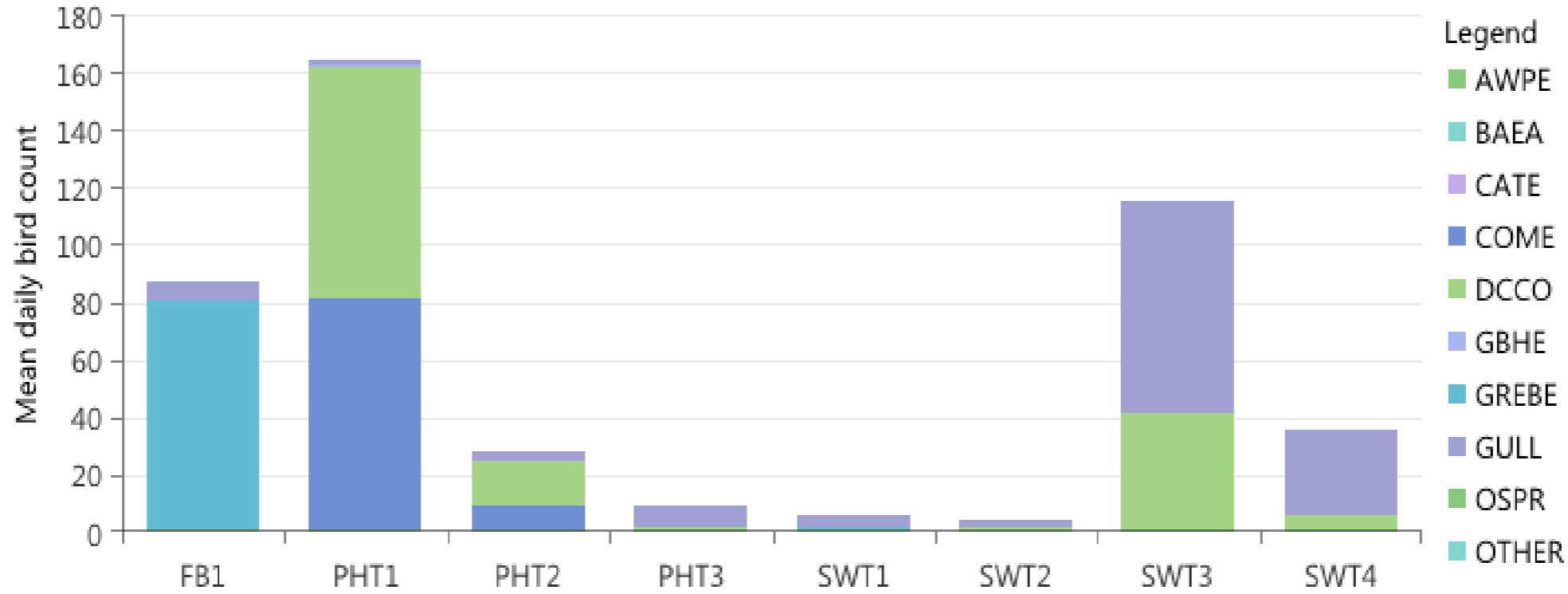
The Dalles Adult Fish Ladder River/Water Temperatures



MEAN COUNTS BY SPECIES

11/18/2012-11/24/2012

The Dalles -

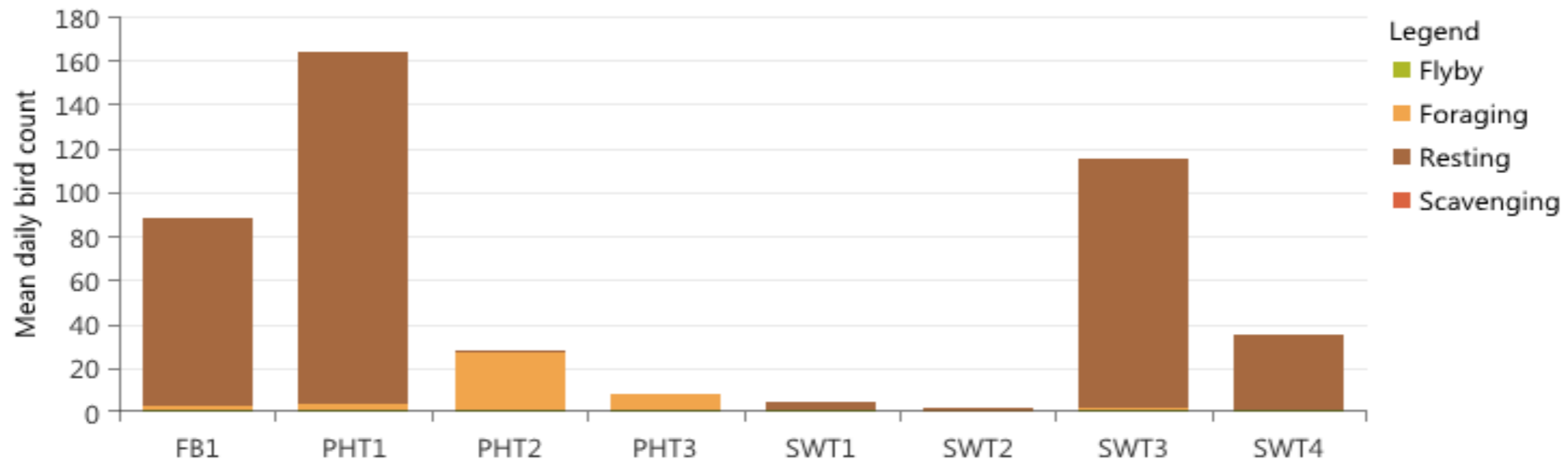


American White Pelican - (AWPE); Bald Eagle - (BAEA); Caspian Tern - (CATE); Common Merganser - (COME)
 Double Crested Cormorant - (DCCO); Great Blue Heron - (GBHE); Grebe - (GREBE); Gull - all species (GULL); Osprey (OSPR)

MEAN COUNTS BY BEHAVIOR

11/18/2012-11/24/2012

The Dalles -



The Dalles Dam Bird Observations Zones

Washington Shore

FB1

PH-T1

PH-T2

SW-T1

PH-T3

SW-T2

SW-T4

SW-T3

Oregon Shore

